

Title: Earthquakes

Questions:

Notes:

Earthquakes:

Where are _____ and volcanoes primarily located?

How is the _____ from an earthquake transferred through the earth's crust?

Where are earthquakes and volcanoes primarily located?



The vast majority of earthquakes and volcanoes occur at the _____ boundaries. A large number of earthquakes and volcanoes occur in an area known as the “_____.” This is where the several other plates interact with the Pacific Plate.

How is the energy from an earthquake transferred through the earth's crust?

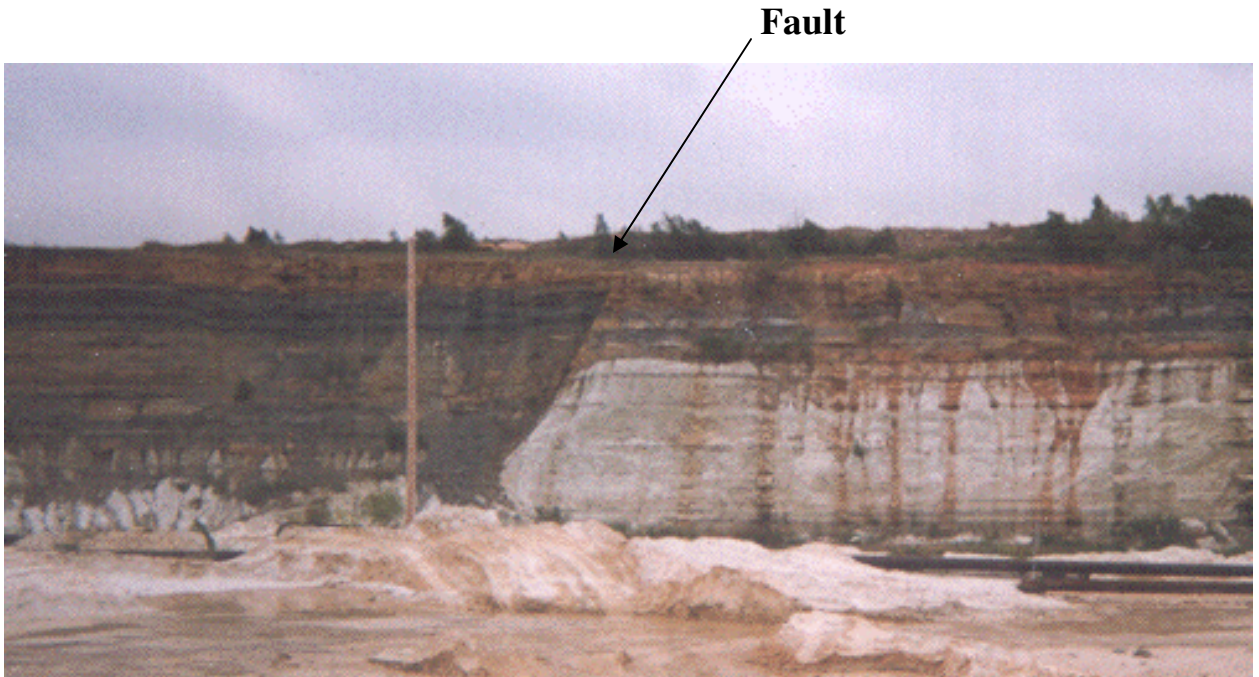
- Seismic waves: Energy waves produced by earthquakes.
 - _____: (Primary) travel underground, small and _____ waves
 - _____: (Secondary) travel underground, medium size and _____
 - _____: travel above ground, large and slow but do the _____ damage.
- Magnitude: Amount of _____ (amplitude) of the _____ waves. Measured on a scale of 1-10 (Richter scale)

Summary:

Questions:

Fault:

- Fault: break in the earth's _____ that can form as a result of a convergent (reverse fault), divergent (normal fault), or transform (strike-slip fault) plate _____.



Focus and Epicenter

- Focus: The point _____ in the earth's crust where the earthquake _____ occur.
- Epicenter: The point on the _____ of the crust that is the _____ of the earthquake (directly above the focus)

