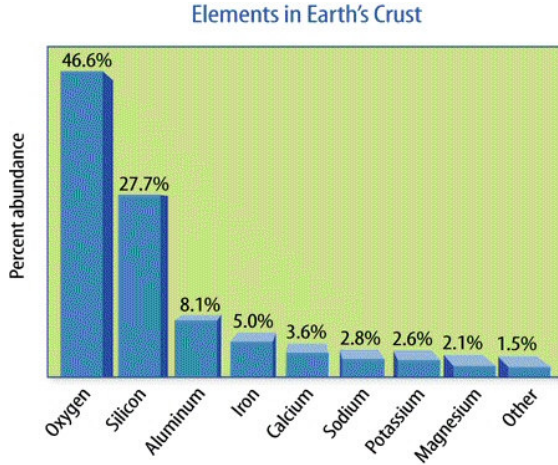


## Rock Cycle – The Story of the Rock Cycle

Questions:

### The Earth's Crust...

- 8 most common \_\_\_\_\_ in the crust:



What two elements make up the majority of the earth's crust?

\_\_\_\_\_

\_\_\_\_\_

### Types of Rocks...

- The \_\_\_\_\_ main kinds of rock are igneous, sedimentary and metamorphic rock.
  - Igneous rock: forms when \_\_\_\_\_ cools and hardens
  - Sedimentary rock: forms when sediments are buried, compacted & \_\_\_\_\_ together
  - Metamorphic rock: forms when existing rock is subjected to great heat & \_\_\_\_\_ over a long period of time

### Igneous Rocks...



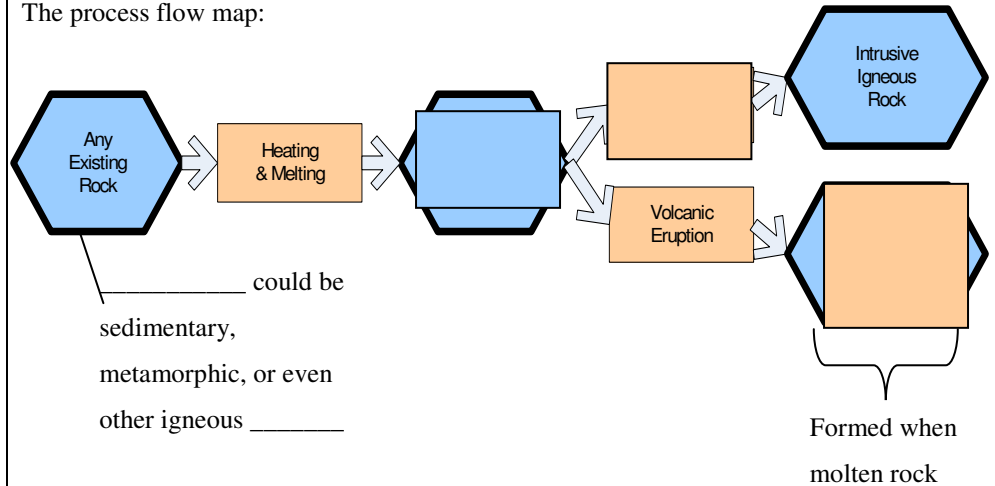
- formed when molten rock \_\_\_\_\_
- 2 types
  - **intrusive igneous rock:** forms when magma cools and hardens \_\_\_\_\_ (i.e., granite which has \_\_\_\_\_ mineral crystals that form from slow cooling underground)
  - **extrusive igneous rock:** forms when \_\_\_\_\_ cools & hardens (i.e., basalt which has very \_\_\_\_\_ mineral crystals due to the lava cooling quickly, not enough time to form large crystals)

Summary:

Questions:

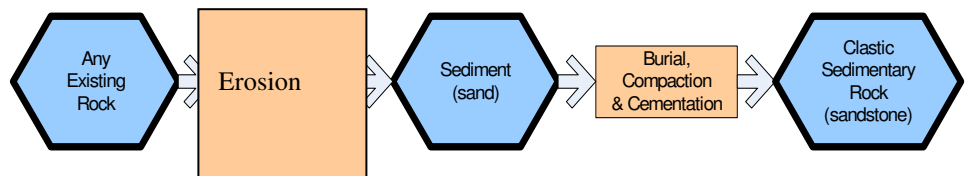
### Igneous Rocks...

The process flow map:

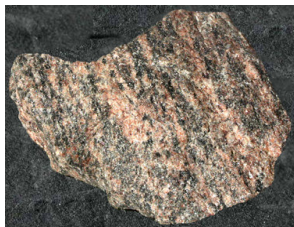


### Sedimentary Rocks...

The process flow map....



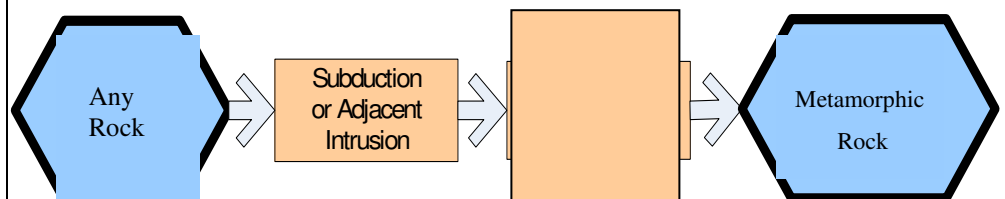
### Metamorphic Rocks...



- Sedimentary or igneous rocks which have undergone such \_\_\_\_\_ changes in temperature, \_\_\_\_\_, structural stress, or chemical environment that they are transformed into \_\_\_\_\_ rocks.

### Metamorphic Rocks...

The process flow map...

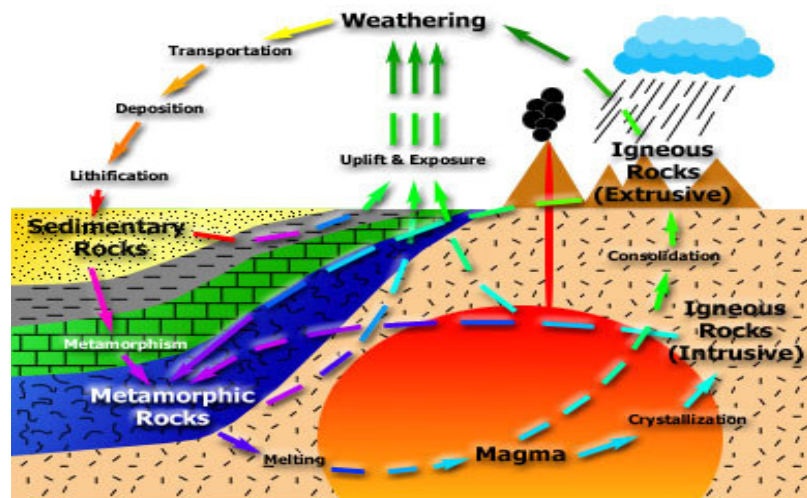


Questions:

**Putting it All Together ☞ The Rock Cycle ☞**

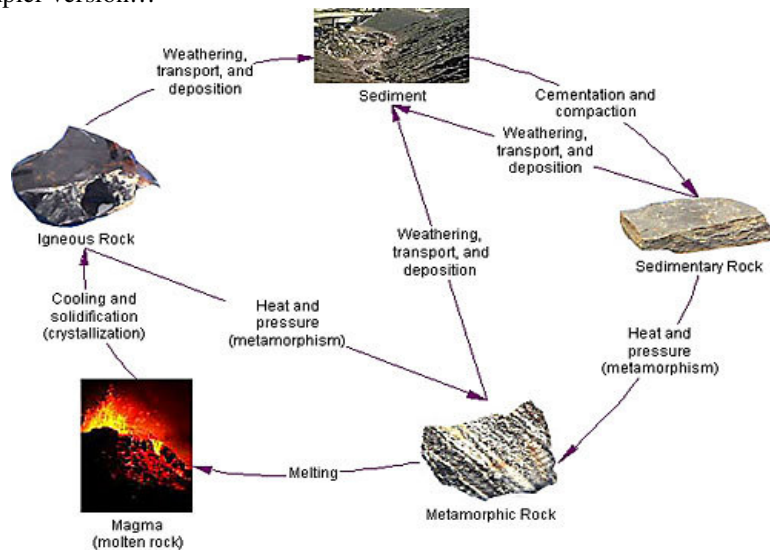
**The Rock Cycle...**

- web of environmental \_\_\_\_\_ that continuously forms and changes \_\_\_\_\_



**The Rock Cycle...**

A simpler version...



**The Rock Cycle...**

and one more...

