

COMMON EQUIPMENT IN THE LABORATORY
 (MORE AT [HTTP://GREENSLIME.INFO/DATA/LAB_EQUIP2/LABEQUIP.HTM](http://GREENSLIME.INFO/DATA/LAB_EQUIP2/LABEQUIP.HTM))



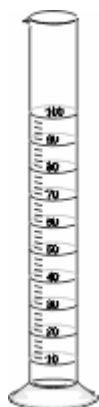
beakers



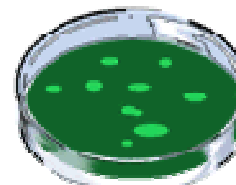
Erlenmeyer
Flask



test
tube



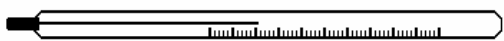
graduated
cylinder



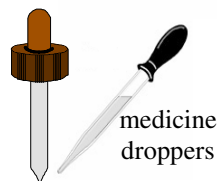
Petri dish



watch
glass



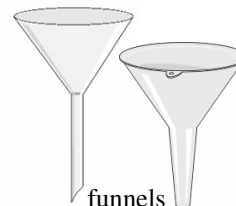
thermometer



medicine
droppers



scoopula



funnels



transfer pipettes



Test tube brush



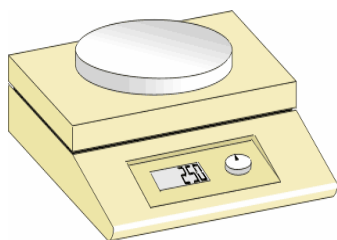
Mortar and
pestle



magnifying
glass



compound
microscope



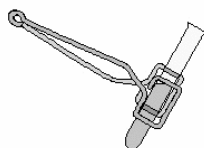
electronic scale



test-tube holder



crucible tongs



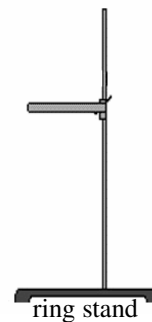
test-tube and
test-tube holder



Bunsen
burner

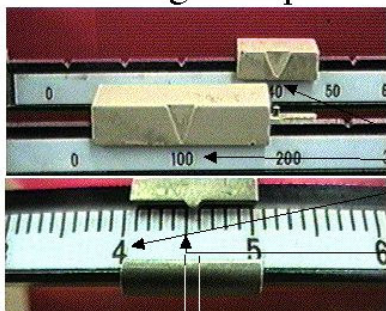


Proper
techniques for
using a Bunsen
burner to heat a
test-tube in the
test-tube holder



ring stand

**Reading a Triple Beam Balance
An Example**



The uppermost photo shows the larger riders on a triple beam balance, while the lower photo is a close-up of the smallest rider. The reading on this balance is:

144.55 g

This digit is an estimate. It is determined by dividing the smallest division on the balance into 10 imaginary units and then estimating where the pointer rests.

Triple Beam Balance

Lab Equipment Information on the Internet:

- library.thinkquest.org/10429/low/lab/lab.htm
- www.chem.hope.edu/labescape/labdrwr/labequip.htm